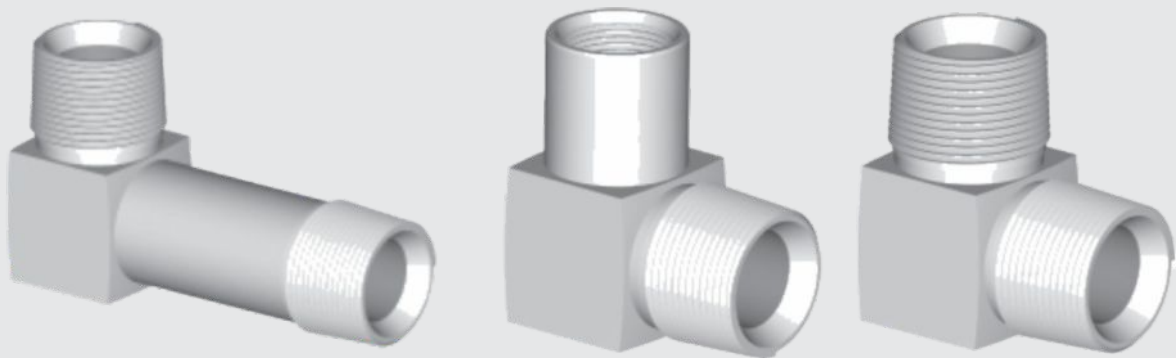
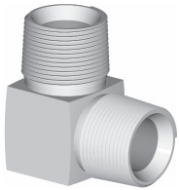


CODOS A 90° SERIE 900



SERIE

911

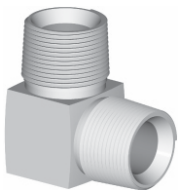


CODO A 90° R. CÓNICA "NPT" EN AMBOS EXTREMOS

CÓDIGO	Rosca Extremo 1 Cónica NPT Ext.	Rosca Extremo 2 Cónica NPT Ext.	
C911-2-2	1/8 - 27 H	1/8 - 27 H	
C911-4-4	1/4 - 18 H	1/4 - 18 H	
C911-6-6	3/8 - 18 H	3/8 - 18 H	
C911-6-8	3/8 - 18 H	1/2 - 14 H	
C911-8-8	1/2 - 14 H	1/2 - 14 H	
C911-8-12	1/2 - 14 H	3/4 - 14 H	
C911-12-12	3/4 - 14 H	3/4 - 14 H	
C911-12-16	3/4 - 14 H	1 - 11 1/2 H	
C911-16-16	1 - 11 1/2 H	1 - 11 1/2 H	
C911-20-20	1 1/4 - 11 1/2 H	1 1/4 - 11 1/2 H	
C911-24-24	1 1/2 - 11 1/2 H	1 1/2 - 11 1/2 H	
C911-32-32	2 - 11 1/2 H	2 - 11 1/2 H	

SERIE

911-B

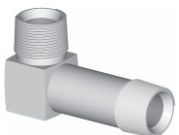


CODO A 90° R. CONICA "BSPT" EN AMBOS EXTREMOS

CÓDIGO	Rosca Extremo 1 BSPT Ext.	Rosca Extremo 2 Cónica NPT Ext.	
C911-B4-B4	1/4 - 19 H	1/4 - 19 H	
C911-B6-B6	3/8 - 19 H	3/8 - 19 H	
C911-B8-B8	1/2 - 14 H	1/2 - 14 H	
C911-B12-B12	3/4 - 14 H	3/4 - 14 H	
C911-B16-B16	1 - 11 H	1 - 11 H	
C911-B20-B20	1 1/4 - 11 H	1 1/4 - 11 H	
C911-B24-B24	1 1/2 - 11 H	1 1/2 - 11 H	
C911-B32-B32	2 - 11 H	2 - 11 H	

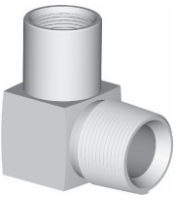
SERIE

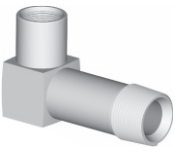
L-911

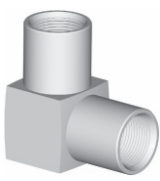



CODO A 90° R. CÓNICA "NPT" Y "LARGO" R. CÓNICA "NPT"

CÓDIGO	Rosca Extremo 1 Cónica NPT Ext.	Rosca Extremo 2 Cónica NPT Ext.	
CL-911-2-2	1/8 - 27 H	1/8 - 27 H	
CL-911-4-4	1/4 - 18 H	1/4 - 18 H	
CL-911-6-6	3/8 - 18 H	3/8 - 18 H	
CL-911-8-8	1/2 - 14 H	1/2 - 14 H	
CL-911-12-12	3/4 - 14 H	3/4 - 14 H	
CL-911-16-16	1 - 11 1/2 H	1 - 11 1/2 H	

SERIE 911	CODO A 90° R. CÓNICA "NPT" INTERIOR Y R. CÓNICA "NPT"		
	CÓDIGO	Rosca Extremo 1 Cónica NPT Int.	Rosca Extremo 2 Cónica NPT Ext.
	C911-2I-2	1/8 - 27 H	1/8 - 27 H
	C911-4I-4	1/4 - 18 H	1/4 - 18 H
	C911-4I-6	1/4 - 18 H	3/8 - 18 H
	C911-6I-6	3/8 - 18 H	3/8 - 18 H
	C911-4I-8	1/4 - 18 H	1/2 - 14 H
	C911-6I-8	3/8 - 18 H	1/2 - 14 H
	C911-8I-8	1/2 - 14 H	1/2 - 14 H
	C911-12I-12	3/4 - 14 H	3/4 - 14 H
	C911-16I-16	1 - 11 1/2 H	1 - 11 1/2 H

SERIE L-911	CODO A 90° R. CÓNICA "NPT" INTERIOR Y "LARGO" R. CÓNICA "NPT"		
	CÓDIGO	Rosca Extremo 1 Cónica NPT Int.	Rosca Extremo 2 Cónica NPT Ext.
	CL-911-2I-2	1/8 - 27 H	1/8 - 27 H
	CL-911-4I-4	1/4 - 18 H	1/4 - 18 H
	CL-911-6I-6	3/8 - 18 H	3/8 - 18 H
	CL-911-8I-8	1/2 - 14 H	1/2 - 14 H
	CL-911-12I-12	3/4 - 14 H	3/4 - 14 H
	CL-911-16I-16	1 - 11 1/2 H	1 - 11 1/2 H

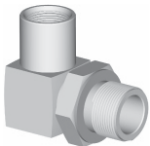
SERIE 911	CODO A 90° R. CÓNICA "NPT" INTERIOR EN AMBOS EXTREMOS		
	CÓDIGO	Rosca Extremo 1 Cónica NPT Int.	Rosca Extremo 2 Cónica NPT Int.
	C911-2I-2I	1/8 - 27 H	1/8 - 27 H
	C911-4I-4I	1/4 - 18 H	1/4 - 18 H
	C911-6I-6I	3/8 - 18 H	3/8 - 18 H
	C911-8I-8I	1/2 - 14 H	1/2 - 14 H
	C911-12I-12I	3/4 - 14 H	3/4 - 14 H
	C911-16I-16I	1 - 11 1/2 H	1 - 11 1/2 H

SERIE 918	CODO A 90° R. "UNF" R. CONICA "NPT" Y ASIENTO AROSELLO		
	CÓDIGO	Rosca Extremo 1 Cónica NPT Ext.	Rosca Extremo 2 UNF Int.
	C918-4-4	1/4 - 18 H	9/16" - 18 H
	C918-6-6	3/8 - 18 H	3/4" - 16 H
	C918-8-6	1/2 - 14 H	3/4" - 16 H
	C918-8-8	1/2 - 14 H	7/8" - 14 H

SERIE

918

CODO A 90° R. "UNF" R. CONICA "NPT" INTERIOR Y ASIENTO AROSELLO

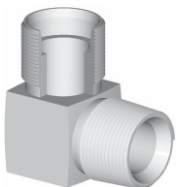


CÓDIGO	Rosca Extremo 1 Conica NPT Int.	Rosca Extremo 1 UNF Ext.	
C918-4I-4	1/4 - 18 H	9/16" - 18 H	
C918-6I-6	3/8 - 18 H	3/4" - 16 H	
C918-8I-6	3/8 - 18 H	3/4" - 16 H	
C918-6I-8	1/2 - 14 H	7/8" - 14 H	
C918-8I-8	1/2 - 14 H	7/8" - 14 H	

SERIE

921

CODO A 90° ALOJAMIENTO VIROLA R. "UNF" Y R. CONICA "NPT"

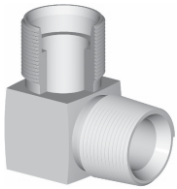


CÓDIGO	Rosca Extremo 1 UNF Ext.	P/ Tubo Diám. Ext.	Rosca Extremo 2 Cónica NPT Ext.	
C921-1-2	3/8" - 24 H	3/16"	1/8 - 27 H	
C921-2-2	7/16" - 20 H	1/4"	1/8 - 27 H	
C921-3-2	1/2" - 20 H	5/16"	1/8 - 27 H	
C921-4-2	9/16" - 18 H	3/8"	1/8 - 27 H	
C921-1-4	3/8" - 24 H	3/16"	1/4 - 18 H	
C921-2-4	7/16" - 20 H	1/4"	1/4 - 18 H	
C921-3-4	1/2" - 20 H	5/16"	1/4 - 18 H	
C921-4-4	9/16" - 18 H	3/8"	1/4 - 18 H	
C921-6-4	3/4" - 16 H	1/2"	1/4 - 18 H	
C921-8-4	7/8" - 14 H	5/8"	1/4 - 18 H	
C921-4-6	9/16" - 18 H	3/8"	3/8 - 18 H	
C921-6-6	3/4" - 16 H	1/2"	3/8 - 18 H	
C921-8-6	7/8" - 14 H	5/8"	3/8 - 18 H	
C921-10-6	1" 1/16 - 12 H	3/4"	3/8 - 18 H	
C921-4-8	9/16" - 18 H	3/8"	1/2 - 14 H	
C921-6-8	3/4" - 16 H	1/2"	1/2 - 14 H	
C921-8-8	7/8" - 14 H	5/8"	1/2 - 14 H	
C921-10-8	1" 1/16 - 12 H	3/4"	1/2 - 14 H	
C921-12-8	1" 3/16 - 12 H	7/8"	1/2 - 14 H	
C921-10-12	1" 1/16 - 12 H	3/4"	3/4 - 14 H	
C921-12-12	1" 3/16 - 12 H	7/8"	3/4 - 14 H	
C921-14-12	1" 5/16 - 12 H	1"	3/4 - 14 H	
C921-14-16	1" 5/16 - 12 H	1"	1 - 11 1/2 H	
C921-16-16	1" 5/8 - 12 H	1" 1/4	1 - 11 1/2 H	
C921-16-20	1" 5/8 - 12 H	1" 1/4	1 1/4 - 11 1/2 H	
C921-20-20	1" 7/8 - 12 H	1" 1/2	1 1/4 - 11 1/2 H	

SERIE

921

CODO A 90° A VIOLA R. "METRICA" Y R. CONICA "NPT" SERIE LIVIANA

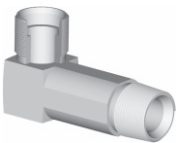


CÓDIGO	Rosca Extremo 1 Metrico Ext.	P/ Tubo Diám. Ext.	Rosca Extremo 2 Cónica NPT Ext.
C921-M14(T8)-4	14 X 1,5 MM	T 8	1/4 - 18 H
C921-M14(T8)-6	14 X 1,5 MM	T 8	3/8 - 18 H
C921-M16(T10)-4	16 X 1,5 MM	T 10	1/4 - 18 H
C921-M16(T10)-6	16 X 1,5 MM	T 10	3/8 - 18 H
C921-M18(T12)-6	18 X 1,5 MM	T 12	3/8 - 18 H
C921-M18(T12)-6	18 X 1,5 MM	T 12	3/8 - 18 H
C921-M22(T15)-8	22 X 1,5 MM	T 15	1/2 - 14 H
C921-M26(T18)-8	26 X 1,5 MM	T 18	1/2 - 14 H
C921-M26(T18)-12	26 X 1,5 MM	T 18	3/4 - 14 H
C921-M30(T22)-8	30 X 1,5 MM	T 22	1/2 - 14 H
C921-M30(T22)-12	30 X 1,5 MM	T 22	3/4 - 14 H
C921-M36X2(T28)-16	36 X 2 MM	T 28	1 - 11 1/2 H
C921-M45X2(T35)-20	45 X 2 MM	T 35	1 1/4 - 11 1/2 H
C921-M52X2(T42)-24	52 X 2 MM	T 42	1 1/2 - 11 1/2 H

SERIE

L-921

CODO A 90° ALOJAMIENTO VIOLA R. "UNF" Y "LARGO" R. CONICA "NPT"

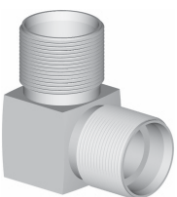


CÓDIGO	Rosca Extremo 1 UNF Ext.	P/ Tubo Diám. Ext.	Rosca Extremo 2 Cónica NPT Ext.
CL-921-2-2	7/16" - 20 H	1/4"	1/8 - 27 H
CL-921-2-4	7/16" - 20 H	1/4"	1/4 - 18 H
CL-921-4-4	9/16" - 18 H	3/8"	1/4 - 18 H
CL-921-6-4	3/4" - 16 H	1/2"	1/4 - 18 H
CL-921-4-6	9/16" - 18 H	3/8"	3/8 - 18 H
CL-921-6-6	3/4" - 16 H	1/2"	3/8 - 18 H
CL-921-8-6	7/8" - 14 H	5/8"	3/8 - 18 H
CL-921-6-8	3/4" - 16 H	1/2"	1/2 - 14 H
CL-921-8-8	7/8" - 14 H	5/8"	1/2 - 14 H
CL-921-10-8	1" 1/16 - 12 H	3/4"	1/2 - 14 H
CL-921-10-12	1" 1/16 - 12 H	3/4"	3/4 - 14 H
CL-921-12-12	1" 3/16 - 12 H	7/8"	3/4 - 14 H
CL-921-14-16	1" 5/16 - 12 H	1"	1 - 11 1/2 H

SERIE

922

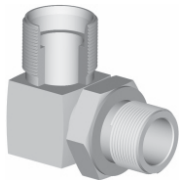
CODO A 90° ALOJAMIENTO VIOLA R. "UNF" EN AMBOS EXTREMOS



CÓDIGO	Rosca Extremo 1 UNF Ext.	P/ Tubo Diám. Ext.	Rosca Extremo 2 UNF Ext.
C922-1-1	3/8" - 24 H	3/16"	3/8" - 24 H
C922-2-2	7/16" - 20 H	1/4"	7/16" - 20 H
C922-3-3	1/2" - 20 H	5/16"	1/2" - 20 H
C922-4-4	9/16" - 18 H	3/8"	9/16" - 18 H
C922-6-6	3/4" - 16 H	1/2"	3/4" - 16 H
C922-8-8	7/8" - 14 H	5/8"	7/8" - 14 H
C922-10-10	1" 1/16 - 12 H	3/4"	1" 1/16 - 12 H
C922-12-12	1" 3/16 - 12 H	7/8"	1" 3/16 - 12 H
C922-14-14	1" 5/16 - 12 H	1"	1" 5/16 - 12 H
C922-16-16	1" 5/8 - 12 H	1" 1/4"	1" 5/8 - 12 H

SERIE

928

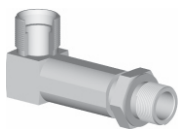


CODO A 90° ALOJ. VIROLA R. "UNF" Y ASIENTO AROSELLO R. "UNF"

CÓDIGO	Rosca Extremo 1 UNF Ext.	P/ Tubo Diám. Ext.	Rosca Extremo 2 UNF Ext.
C928-4-4	9/16" - 18 H	3/8"	9/16" - 18 H
C928-6-4	3/4" - 16 H	1/2"	9/16" - 18 H
C928-8-4	7/8" - 14 H	5/8"	9/16" - 18 H
C928-4-6	9/16" - 18 H	3/8"	3/4" - 16 H
C928-6-6	3/4" - 16 H	1/2"	3/4" - 16 H
C928-8-6	7/8" - 14 H	5/8"	3/4" - 16 H
C928-4-8	9/16" - 18 H	3/8"	7/8" - 14 H
C928-6-8	3/4" - 16 H	1/2"	7/8" - 14 H
C928-8-8	7/8" - 14 H	5/8"	7/8" - 14 H
C928-10-8	1" 1/16 - 12 H	3/4"	7/8" - 14 H
C928-8-10	7/8" - 14 H	5/8"	1" 1/16 - 12 H
C928-10-10	1" 1/16 - 12 H	3/4"	1" 1/16 - 12 H
C928-12-10	1" 3/16 - 12 H	7/8"	1" 1/16 - 12 H
C928-14-10	1" 5/16 - 12 H	1"	1" 1/16 - 12 H
C928-8-12	7/8" - 14 H	5/8"	1" 3/16 - 12 H
C928-10-12	1" 1/16 - 12 H	3/4"	1" 3/16 - 12 H
C928-12-12	1" 3/16 - 12 H	7/8"	1" 3/16 - 12 H
C928-14-12	1" 5/16 - 12 H	1"	1" 3/16 - 12 H
C928-14-14	1" 5/16 - 12 H	1"	1" 5/16 - 12 H

SERIE

L-928



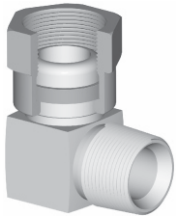
C. A 90° ALOJ. VIROLA R. "UNF" Y "LARGO" ASIENTO AROSELLO R. "UNF"

CÓDIGO	Rosca Extremo 1 UNF Ext.	P/ Tubo Diám. Ext.	Rosca Extremo 2 UNF Ext.
CL-928-4-4	9/16" - 18 H	3/8"	9/16" - 18 H
CL-928-6-4	3/4" - 16 H	1/2"	9/16" - 18 H
CL-928-4-6	9/16" - 18 H	3/8"	3/4" - 16 H
CL-928-6-6	3/4" - 16 H	1/2"	3/4" - 16 H
CL-928-8-6	7/8" - 14 H	5/8"	3/4" - 16 H
CL-928-6-8	3/4" - 16 H	1/2"	7/8" - 14 H
CL-928-8-8	7/8" - 14 H	5/8"	7/8" - 14 H
CL-928-10-8	1" 1/16 - 12 H	3/4"	7/8" - 14 H
CL-928-8-10	7/8" - 14 H	5/8"	1" 1/16 - 12 H
CL-928-10-10	1" 1/16 - 12 H	3/4"	1" 1/16 - 12 H
CL-928-10-12	1" 1/16 - 12 H	3/4"	1" 3/16 - 12 H
CL-928-12-12	1" 3/16 - 12 H	7/8"	1" 3/16 - 12 H

SERIE

931

CODO A 90° H. GIRATORIA ALOJ. VIOLA R. "UNF" Y R. CONICA "NPT"

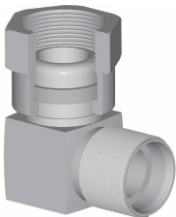


CÓDIGO	Rosca Extremo 1 UNF Ext.	P/ Tubo Diám. Ext.	Rosca Extremo 2 Cónica NPT Ext.
C931-4-4	9/16" - 18 H	3/8"	1/4 - 18 H
C931-6-4	3/4" - 16 H	1/2"	1/4 - 18 H
C931-4-6	9/16" - 18 H	3/8"	3/8 - 18 H
C931-6-6	3/4" - 16 H	1/2"	3/8 - 18 H
C931-8-6	7/8" - 14 H	5/8"	3/8 - 18 H
C931-6-8	3/4" - 16 H	1/2"	1/2 - 14 H
C931-8-8	7/8" - 14 H	5/8"	1/2 - 14 H
C931-10-8	1" 1/16 - 12 H	3/4"	1/2 - 14 H
C931-10-12	1" 1/16 - 12 H	3/4"	3/4 - 14 H
C931-12-12	1" 3/16 - 12 H	7/8"	3/4 - 14 H
C931-16-16	1" 5/8 - 12 H	1" 1/4	1 - 11 1/2 H

SERIE

932

CODO A 90° ALOJAMIENTO VIOLA R. "UNF" EN AMBOS EXTREMOS

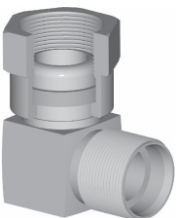


CÓDIGO	Rosca Extremo 1 UNF Ext.	P/ Tubo Diám. Ext.	Rosca Extremo 2 UNF Ext.
C932-4-4	9/16" - 18 H	3/8"	9/16" - 18 H
C932-6-4	3/4" - 16 H	1/2" - 3/8"	9/16" - 18 H
C932-4-6	9/16" - 18 H	3/8" - 1/2"	3/4" - 16 H
C932-6-6	3/4" - 16 H	1/2"	3/4" - 16 H
C932-8-6	7/8" - 14 H	5/8" - 1/2"	3/4" - 16 H
C932-6-8	3/4" - 16 H	1/2" - 5/8"	7/8" - 14 H
C932-8-8	7/8" - 14 H	5/8"	7/8" - 14 H
C932-10-8	1" 1/16 - 12 H	3/4" - 5/8"	7/8" - 14 H
C932-10-10	1" 1/16 - 12 H	3/4"	1" 1/16 - 12 H
C932-12-12	1" 3/16 - 12 H	7/8"	1" 3/16 - 12 H
C932-14-14	1" 5/16 - 12 H	1"	1" 5/16 - 12 H

SERIE

AL 932

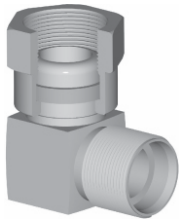
CODO A 90° HG. A.VIOLA R. "METRICO" Y M A.VIOLA R. "METRICO" SERIA LIVIANA



CÓDIGO	Rosca Extremo 1 Metrico Int.	P/ Tubo Diám. Ext.	Rosca Extremo 2 Metrico Ext..
C AL 932-M14-M14	14 X 1,5 MM	T 8	14 X 1,5 MM
C AL 932-M16-M16	16 X 1,5 MM	T 10	16 X 1,5 MM
C AL 932-M18-M18	18 X 1,5 MM	T 12	18 X 1,5 MM
C AL 932-M22-M22	22 X 1,5 MM	T 15	22 X 1,5 MM
C AL 932-M26-M26	26 X 1,5 MM	T 18	26 X 1,5 MM
C AL 932-M30X2-M30X2	30 X 2 MM	T 22	30 X 2 MM
C AL 932-M36X2-M36X2	36 X 2 MM	T 28	36 X 2 MM
C AL 932-M45X2-M45X2	45 X 2 MM	T 35	45 X 2 MM
C AL 932-M52X2-M52X2	52 X 2 MM	T 45	52 X 2 MM

SERIE

AL 932

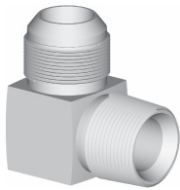


CODO A 90° HG. A.VIOLA R. "METRICO" Y M A.VIOLA R. "METRICO" SERIA PESADA

CÓDIGO	Rosca Extremo 1 Metrico Int.	P/ Tubo Diám. Ext.	Rosca Extremo 2 Metrico Ext..
C AL 932-M16-M16	16 X 1,5 MM	T 8	16 X 1,5 MM
C AL 932-M18-M18	18 X 1,5 MM	T 10	18 X 1,5 MM
C AL 932-M20-M20	20 X 1,5 MM	T 12	20 X 1,5 MM
C AL 932-M22-M22	22 X 1,5 MM	T 14	22 X 1,5 MM
C AL 932-M24-M24	24 X 1,5 MM	T 16	24 X 1,5 MM
C AL 932-M30X2-M30X2	30 X 2 MM	T 20	30 X 2 MM
C AL 932-M36X2-M36X2	36 X 2 MM	T 25	36 X 2 MM
C AL 932-M42X2-M45X2	42 X 2 MM	T 30	42 X 2 MM
C AL 932-M52X2-M52X2	52 X 2 MM	T 38	52 X 2 MM

SERIE

941



CODO A 90° ASIENTO JIC 37° R. "UNF" Y R. CONICA "NPT"

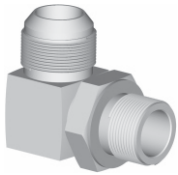
CÓDIGO	Rosca Extremo 1 UNF Ext.	Rosca Extremo 2 Cónica NPT Ext.	
C941-2-2	7/16" - 20 H	1/8 - 27 H	
C941-3-2	1/2" - 20 H	1/8 - 27 H	
C941-4-2	9/16" - 18 H	1/8 - 27 H	
C941-2-4	7/16" - 20 H	1/4 - 18 H	
C941-3-4	1/2" - 20 H	1/4 - 18 H	
C941-4-4	9/16" - 18 H	1/4 - 18 H	
C941-6-4	3/4" - 16 H	1/4 - 18 H	
C941-8-4	7/8" - 14 H	1/4 - 18 H	
C941-4-6	9/16" - 18 H	3/8 - 18 H	
C941-6-6	3/4" - 16 H	3/8 - 18 H	
C941-8-6	7/8" - 14 H	3/8 - 18 H	
C941-4-8	9/16" - 18 H	1/2 - 14 H	
C941-6-8	3/4" - 16 H	1/2 - 14 H	
C941-8-8	7/8" - 14 H	1/2 - 14 H	
C941-10-8	1" 1/16 - 12 H	1/2 - 14 H	
C941-12-8	1" 3/16 - 12 H	1/2 - 14 H	
C941-8-12	7/8" - 14 H	3/4 - 14 H	
C941-10-12	1" 1/16 - 12 H	3/4 - 14 H	
C941-12-12	1" 3/16 - 12 H	3/4 - 14 H	
C941-14-12	1" 5/16 - 12 H	3/4 - 14 H	
C941-12-16	1" 3/16 - 12 H	1 - 11 1/2 H	
C941-14-16	1" 5/16 - 12 H	1 - 11 1/2 H	
C941-16-16	1" 5/8 - 12 H	1 - 11 1/2 H	
C941-16-20	1" 5/8 - 12 H	1 1/4 - 11 1/2 H	
C941-20-20	1" 7/8 - 12 H	1 1/4 - 11 1/2 H	
C941-24-32	2" 1/2 - 12 H	2" - 11 1/2 H	

SERIE L-941	CODO A 90° ASIENTO JIC 37° R. "UNF" Y "LARGO" R. CONICA "NPT"		
	CÓDIGO	Rosca Extremo 1 UNF Ext.	Rosca Extremo 2 Cónica NPT Ext.
	CL-941-2-2	7/16" - 20 H	1/8 - 27 H
	CL-941-4-2	9/16" - 18 H	1/8 - 27 H
	CL-941-2-4	7/16" - 20 H	1/4 - 18 H
	CL-941-4-4	9/16" - 18 H	1/4 - 18 H
	CL-941-6-4	3/4" - 16 H	1/4 - 18 H
	CL-941-4-6	9/16" - 18 H	3/8 - 18 H
	CL-941-6-6	3/4" - 16 H	3/8 - 18 H
	CL-941-8-6	7/8" - 14 H	3/8 - 18 H
	CL-941-6-8	3/4" - 16 H	1/2 - 14 H
	CL-941-8-8	7/8" - 14 H	1/2 - 14 H
	CL-941-10-8	1" 1/16 - 12 H	1/2 - 14 H
	CL-941-10-12	1" 1/16 - 12 H	3/4 - 14 H
	CL-941-12-12	1" 3/16 - 12 H	3/4 - 14 H
	CL-941-14-12	1" 5/16 - 12 H	3/4 - 14 H
	CL-941-14-16	1" 5/16 - 12 H	1 - 11 1/2 H
	CL-941-16-16	1" 5/8 - 12 H	1 - 11 1/2 H

SERIE 944	CODO A 90° ASIENTO JIC 37° R. "UNF" EN AMBOS EXTREMOS		
	CÓDIGO	Rosca Extremo 1 UNF Ext.	Rosca Extremo 2 UNF Ext.
	C944-2-2	7/16" - 20 H	7/16" - 20 H
	C944-3-3	1/2" - 20 H	1/2" - 20 H
	C944-4-4	9/16" - 18 H	9/16" - 18 H
	C944-6-6	3/4" - 16 H	3/4" - 16 H
	C944-8-8	7/8" - 14 H	7/8" - 14 H
	C944-10-10	1" 1/16 - 12 H	1" 1/16 - 12 H
	C944-12-12	1" 3/16 - 12 H	1" 3/16 - 12 H
	C944-14-14	1" 5/16 - 12 H	1" 5/16 - 12 H
	C944-16-16	1" 5/8 - 12 H	1" 5/8 - 12 H
	C944-20-20	1" 7/8 - 12 H	1" 7/8 - 12 H

SERIE

948

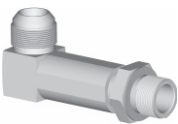


CODO A 90° ASIENTO JIC 37° R. "UNF" Y ASIENTO AROSELLO R. "UNF"

CÓDIGO	Rosca Extremo 1 UNF Ext.	Rosca Extremo 2 UNF Ext.
C948-2-2	7/16" - 20 H	7/16" - 20 H
C948-2-3	7/16" - 20 H	1/2" - 20 H
C948-3-3	1/2" - 20 H	1/2" - 20 H
C948-4-3	9/16" - 18 H	1/2" - 20 H
C948-2-4	7/16" - 20 H	9/16" - 18 H
C948-3-4	1/2" - 20 H	9/16" - 18 H
C948-4-4	9/16" - 18 H	9/16" - 18 H
C948-6-4	3/4" - 16 H	9/16" - 18 H
C948-8-4	7/8" - 14 H	9/16" - 18 H
C948-6-5	3/4" - 16 H	5/8" - 18 H
C948-4-6	9/16" - 18 H	3/4" - 16 H
C948-6-6	3/4" - 16 H	3/4" - 16 H
C948-8-6	7/8" - 14 H	3/4" - 16 H
C948-6-8	3/4" - 16 H	7/8" - 14 H
C948-8-8	7/8" - 14 H	7/8" - 14 H
C948-10-8	1" 1/16 - 12 H	7/8" - 14 H
C948-12-8	1" 3/16 - 12 H	7/8" - 14 H
C948-8-10	7/8" - 14 H	1" 1/16 - 12 H
C948-10-10	1" 1/16 - 12 H	1" 1/16 - 12 H
C948-12-10	1" 3/16 - 12 H	1" 1/16 - 12 H
C948-14-10	1" 5/16 - 12 H	1" 1/16 - 12 H
C948-8-12	7/8" - 14 H	1" 3/16 - 12 H
C948-10-12	1" 1/16 - 12 H	1" 3/16 - 12 H
C948-12-12	1" 3/16 - 12 H	1" 3/16 - 12 H
C948-14-12	1" 5/16 - 12 H	1" 3/16 - 12 H
C948-12-14	1" 3/16 - 12 H	1" 5/16 - 12 H
C948-14-14	1" 5/16 - 12 H	1" 5/16 - 12 H
C948-14-16	1" 5/16 - 12 H	1" 5/8 - 12 H
C948-16-16	1" 5/8 - 12 H	1" 5/8 - 12 H

SERIE

L-948



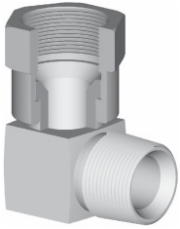
C. A 90° ASIENT. JIC 37° R. "UNF" Y "largo" ASIENT. AROSELLO R. "UNF"

CÓDIGO	Rosca Extremo 1 UNF Ext.	Rosca Extremo 2 UNF Ext.
CL-948-4-4	9/16" - 18 H	9/16" - 18 H
CL-948-6-4	3/4" - 16 H	9/16" - 18 H
CL-948-4-6	9/16" - 18 H	3/4" - 16 H
CL-948-6-6	3/4" - 16 H	3/4" - 16 H
CL-948-8-6	7/8" - 14 H	3/4" - 16 H
CL-948-6-8	3/4" - 16 H	7/8" - 14 H
CL-948-8-8	7/8" - 14 H	7/8" - 14 H
CL-948-10-8	1" 1/16 - 12 H	7/8" - 14 H
CL-948-10-10	1" 1/16 - 12 H	1" 1/16 - 12 H
CL-948-10-12	1" 1/16 - 12 H	1" 3/16 - 12 H
CL-948-12-12	1" 3/16 - 12 H	1" 3/16 - 12 H

SERIE

951

CODO A 90° H. GIRATORIA ASIENTO JIC 37° R. "UNF" Y R. CONICA "NPT"

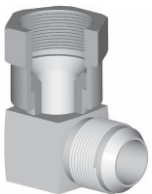


CÓDIGO	Rosca Extremo 1 UNF Ext.	Rosca Extremo 2 Cónica NPT Ext.	
C951-4-4	9/16" - 18 H	1/4 - 18 H	
C951-6-4	3/4" - 16 H	1/4 - 18 H	
C951-4-6	9/16" - 18 H	3/8 - 18 H	
C951-6-6	3/4" - 16 H	3/8 - 18 H	
C951-8-6	7/8" - 14 H	3/8 - 18 H	
C951-6-8	3/4" - 16 H	1/2 - 14 H	
C951-8-8	7/8" - 14 H	1/2 - 14 H	
C951-10-8	1" 1/16 - 12 H	1/2 - 14 H	
C951-10-10	1" 1/16 - 12 H	5/8 - 14 H	
C951-10-12	1" 1/16 - 12 H	3/4 - 14 H	
C951-12-12	3/4 - 14 H	3/4 - 14 H	
C951-14-12	1" 5/16 - 12 H	3/4 - 14 H	

SERIE

954

C. A 90° H. GIRAT. ASIENTO JIC 37° R. "UNF" Y ASIENTO JIC 37° R. "UNF"

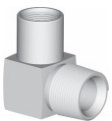


CÓDIGO	Rosca Extremo 1 UNF Ext.	Rosca Extremo 2 UNF Ext.	
C954-4-4	9/16" - 18 H	9/16" - 18 H	
C954-6-6	3/4" - 16 H	3/4" - 16 H	
C954-8-8	7/8" - 14 H	7/8" - 14 H	
C954-10-10	1" 1/16 - 12 H	1" 1/16 - 12 H	
C954-12-12	3/4 - 14 H	3/4 - 14 H	
C954-14-14	1" 5/16 - 12 H	1" 5/16 - 12 H	
C954-16-16	1" 5/8 - 12 H	1" 5/8 - 12 H	

SERIE

981

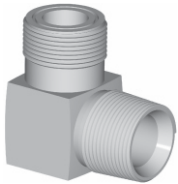
CODO A 90° ASIENTO AROSELLO R. "UNF" INTERIOR Y R. CONICA "NPT"



CÓDIGO	Rosca Extremo 1 UNF Ext.	Rosca Extremo 2 Cónica NPT Ext.	
C981-4I-4	9/16" - 18 H	1/4 - 18 H	
C981-6I-6	3/4" - 16 H	3/8 - 18 H	
C981-8I-6	7/8" - 14 H	3/8 - 18 H	
C981-8I-8	7/8" - 14 H	1/2 - 14 H	

SERIE

AF-981



C. A 90° ASIENT. AROSELLO "FRONTAL" ORFS R. "UNF" Y R. CONICA "NPT"

CÓDIGO	Rosca Extremo 1 UNF Ext.	Rosca Extremo 2 Cónica NPT Ext.	
CAF-981-4-2	9/16" - 18 H	1/8 - 27 H	
CAF-981-4-4	9/16" - 18 H	1/4 - 18 H	
CAF-981-5-4	11/16" - 16	1/4 - 18 H	
CAF-981-4-6	9/16" - 18 H	3/8 - 18 H	
CAF-981-5-6	11/16" - 16 H	3/8 - 18 H	
CAF-981-5-8	11/16" - 16 H	1/2 - 14 H	
CAF-981-7-6	13/16" - 16 H	3/8 - 18 H	
CAF-981-7-8	13/16" - 16 H	1/2 - 14 H	
CAF-981-9-8	1" - 11 H	1/2 - 14 H	
CAF-981-12-12	1" 3/16 - 12 H	3/4 - 14 H	
CAF-981-15-12	1" 7/16 - 12 H	3/4 - 14 H	
CAF-981-15-16	1" 7/16 - 12 H	1" - 11 1/2	
CAF-981-17-16	1" 11/16 - 12 H	1" - 11 1/2	
CAF-981-17-20	1" 11/16 - 12 H	1" 1/2 - 11 1/2	
CAF-981-22-20	2" - 12 H	1" 1/4 - 11 1/2	
CAF-981-22-24	2" - 12 H	1" 1/2 - 11 1/2	

SERIE

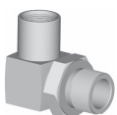
LAF981

CODO LARGO A 90° ORFS R. "UNF" Y R. CONICA "NPT"

CÓDIGO	Rosca Extremo 1 UNF Ext.	Rosca Extremo 2 Cónica NPT Ext.	
C L AF-981-4-4	9/16" - 18 H	1/4 - 18 H	
C L AF-981-5-4	11/16" - 16	1/4 - 18 H	
C L AF-981-7-6	13/16" - 16 H	3/8 - 18 H	
C L AF-981-9-8	1" - 11 H	1/2 - 14 H	
C L AF-981-12-12	1" 3/16 - 12 H	3/4 - 14 H	

SERIE

988

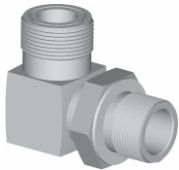


C. A 90° ASIENT. AROSELLO R. "UNF" INTERIOR Y ASIENT. AROSELLO R. "UNF"

CÓDIGO	Rosca Extremo 1 UNF Int.	Rosca Extremo 2 UNF Ext.	
C988-4I-4	9/16" - 18 H	9/16" - 18 H	
C988-6I-6	3/4" - 16 H	3/4" - 16 H	
C988-6I-8	3/4" - 16 H	7/8" - 14 H	
C988-8I-8	7/8" - 14 H	7/8" - 14 H	

SERIE

AF-988



C. A 90° ASIENT. AROSELLO R. "UNF" Y AROSELLO "FRONTAL" ORFS R. "UNF"

CÓDIGO	Rosca Extremo 1 UNF Ext.	Rosca Extremo 2 UNF Ext.
CAF-988-4-2	9/16" - 18 H	7/16" - 20 H
CAF-988-5-2	11/16" - 16 H	7/16" - 20 H
CAF-988-5-3	11/16" - 16 H	1/2" - 20 H
CAF-988-4-4	9/16" - 18 H	9/16" - 18 H
CAF-988-4-6	9/16" - 18 H	3/4" - 16 H
CAF-988-5-4	11/16" - 16 H	9/16" - 18 H
CAF-988-5-6	11/16" - 16 H	3/4" - 16 H
CAF-988-5-8	11/16" - 16 H	7/8" - 14 H
CAF-988-7-4	13/16" - 16 H	9/16" - 18 H
CAF-988-7-6	13/16" - 16 H	3/4" - 16 H
CAF-988-7-8	13/16" - 16 H	7/8" - 14 H
CAF-988-7-10	13/16" - 16 H	1" 1/16" - 12 H
CAF-988-9-6	1" - 11 H	3/4" - 16 H
CAF-988-9-8	1" - 11 H	7/8" - 14 H
CAF-988-9-10	1" - 11 H	1" 1/16" - 12 H
CAF-988-12-6	1" 3/16" - 12 H	3/4" - 16 H
CAF-988-12-8	1" 3/16" - 12 H	7/8" - 14 H
CAF-988-12-10	1" 3/16" - 12 H	1" 1/16" - 12 H
CAF-988-12-12	1" 3/16" - 12 H	1" 3/16" - 12 H
CAF-988-12-14	1" 3/16" - 12 H	1" 5/16" - 12 H
CAF-988-15-10	1" 7/16" - 12 H	1" 1/16" - 12 H
CAF-988-15-12	1" 7/16" - 12 H	1" 3/16" - 12 H
CAF-988-15-14	1" 7/16" - 12 H	1" 5/16" - 12 H
CAF-988-15-16	1" 7/16" - 12 H	1" 5/8" - 12 H
CAF-988-17-14	1" 11/16" - 12 H	1" 5/16" - 12 H
CAF-988-17-16	1" 11/16" - 12 H	1" 5/8" - 12 H
CAF-988-17-20	1" 11/16" - 12 H	1" 7/8" - 12 H
CAF-988-22-16	2" - 12 H	1" 5/8" - 12 H
CAF-988-22-20	2" - 12 H	1" 7/8" - 12 H

SERIE

988-AF

CODO A 90° ORFS R. "UNF" EN AMBOS EXTREMOS

CÓDIGO	Rosca Extremo 1 UNF Ext.	Rosca Extremo 2 UNF Ext.
C 988-AF4-AF4	9/16" - 18 H	9/16" - 18 H
C 988-AF5-AF5	11/16" - 16 H	11/16" - 16 H
C 988-AF7-AF7	13/16" - 16 H	13/16" - 16 H
C 988-AF9-AF9	1" - 11 H	1" - 11 H
C 988-AF12-AF12	1" 3/16" - 12 H	1" 3/16" - 12 H
C 988-AF15-AF15	1" 7/16" - 12 H	1" 7/16" - 12 H
C 988-AF17-AF17	1" 11/16" - 12 H	1" 11/16" - 12 H
C 988-AF22-AF22	2" - 12 H	2" - 12 H

SERIE OP 988	CODO A 90° ORFS R. "UNF" Y AROSELLO R. "METRICO"		
	CÓDIGO	Rosca Extremo 1 UNF Ext.	Rosca Extremo 2 Metrico Ext.
C OP 988-AF4-M14		9/16" - 18 H	14 X 1,5 MM
C OP 988-AF5-M14		11/16" - 16 H	14 X 1,5 MM
C OP 988-AF5-M16		11/16" - 16 H	16 X 1,5 MM
C OP 988-AF7-M18		13/16" - 16 H	18 X 1,5 MM
C OP 988-AF9-M22		1" - 11 H	22 X 1,5 MM
C OP 988-AF12-M27		1"3/16 - 12 H	27 X 1,5 MM
C OP 988-AF15-M33		1"7/16 - 12 H	33 X 2 MM
C OP 988-AF17-M38		1"11/16 - 12 H	38 X 2 MM

SERIE OP 948	CODO A 90° JIC R. "UNF" Y AROSELLO R. "BSP"		
	CÓDIGO	Rosca Extremo 1 UNF Ext.	Rosca Extremo 2 BSP Ext.
C OP 948-4-B4		9/16" - 18 H	1/4" - 19 H
C OP 948-4-B6		9/16" - 18 H	3/8" - 19 H
C OP 948-6-B6		3/4" - 16 H	3/8" - 19 H
C OP 948-6-B8		3/4" - 16 H	1/2" - 14 H
C OP 948-8-B8		7/8" - 14 H	1/2" - 14 H
C OP 948-10-B12		1" 1/16 - 12 H	3/4" - 14 H
C OP 948-12-B12		1"3/16 - 12 H	3/4" - 14 H
C OP 948-14-B16		1"5/16 - 12 H	1" - 11 H

SERIE L OP 948	CODO LARGO A 90° JIC R. "UNF" Y AROSELLO R. "BSP"		
	CÓDIGO	Rosca Extremo 1 UNF Ext.	Rosca Extremo 2 BSP Ext.
C L OP 948-4-B4		9/16" - 18 H	1/4" - 19 H
C L OP 948-4-B6		9/16" - 18 H	3/8" - 19 H
C L OP 948-6-B6		3/4" - 16 H	3/8" - 19 H
C L OP 948-6-B8		3/4" - 16 H	1/2" - 14 H
C L OP 948-8-B8		7/8" - 14 H	1/2" - 14 H

SERIE P 988 AF	CODO PASACHAPA A 90° ORFS R. "UNF" EN AMBOS EXTREMOS		
	CÓDIGO	Rosca Extremo 1 UNF Ext.	Rosca Extremo 2 UNF Ext.
C P 988-AF4-AF4		9/16" - 18 H	9/16" - 18 H
C P 988-AF5-AF5		11/16" - 16 H	11/16" - 16 H
C P 988-AF7-AF7		13/16" - 16 H	13/16" - 16 H
C P 988-AF9-AF9		1" - 11 H	1" - 11 H
C P 988-AF12-AF12		1"3/16 - 12 H	1"3/16 - 12 H
C P 988-AF15-AF15		1"7/16 - 12 H	1"7/16 - 12 H
C P 988-AF17-AF17		1"11/16 - 12 H	1"11/16 - 12 H
C P 988-AF22-AF22		2" - 12 H	2" - 12 H

SERIE AF 9P8	CODO A 90° GIRATORIO ORFS R. "UNF" Y R. ORFS "UNF"		
	CÓDIGO	Rosca Extremo 1 UNF Int.	Rosca Extremo 2 UNF Ext.
C AF 9P8-4-4		9/16" - 18 H	9/16" - 18 H
C AF 9P8-5-5		11/16" - 16 H	11/16" - 16 H
C AF 9P8-7-7		13/16" - 16 H	13/16" - 16 H
C AF 9P8-9-9		1" - 11 H	1" - 11 H
C AF 9P8-12-12		1"3/16 - 12 H	1"3/16 - 12 H
C AF 9P8-15-15		1"7/16 - 12 H	1"7/16 - 12 H
C AF 9P8-17-17		1"11/16 - 12 H	1"11/16 - 12 H
C AF 9P8-22-22		2" - 12 H	2" - 12 H

SERIE OP 988	CODO A 90° ORFS R. "UNF" Y AROSELLO R. "BSP"		
	CÓDIGO	Rosca Extremo 1 UNF Ext.	Rosca Extremo 2 BSP Ext.
C OP 988-AF4-B4		9/16" - 18 H	1/4" - 19 H
C OP 988-AF4-B6		9/16" - 18 H	3/8" - 19 H
C OP 988-AF5-B4		11/16" - 16 H	1/4" - 19 H
C OP 988-AF5-B6		11/16" - 16 H	3/8" - 19 H
C OP 988-AF7-B6		13/16" - 16 H	3/8" - 19 H
C OP 988-AF7-B8		13/16" - 16 H	1/2" - 14 H
C OP 988-AF7-B12		13/16" - 16 H	3/4" - 14 H
C OP 988-AF9-B6		1" - 11 H	3/8" - 19 H
C OP 988-AF9-B8		1" - 11 H	1/2" - 14 H
C OP 988-AF12-B8		1"3/16 - 12 H	1/2" - 14 H
C OP 988-AF12-B12		1"3/16 - 12 H	3/4" - 14 H
C OP 988-AF15-B12		1"7/16 - 12 H	3/4" - 14 H
C OP 988-AF17-B16		1"11/16 - 12 H	1" - 11 H
C OP 988-AF22-B20		2" - 12 H	1"1/4 - 11 H



DISTRIBUIDOR OFICIAL EN ARGENTINA



Dynamics



TUDERTECHNICA



Stucchi

SPIR STAR



OP



GESTION DE LA CALIDAD

IR-6005-1128
IRAM INSTITUTO ARGENTINO DE NORMALIZACION
Acreditación SC 004



GESTION DE LA CALIDAD

IR-6005-1128
IRAM INSTITUTO ARGENTINO DE NORMALIZACION
Acreditación SC 004



Alcance:
Casa Central

Comercialización de terminales, accesorios, mangueras y cañerías oleohidráulicas.

Comercialización de kit de "circuitos oleohidráulicos" para fabricantes de equipos originales (OEM).

Alcance:
Planta Parque Industrial "La Victoria"

Diseño, Desarrollo y Manufactura de terminales, accesorios, ensambles de mangueras y cañerías oleohidráulicas.

Diseño, Desarrollo y Manufactura de kit de "circuitos oleohidráulicos" para fabricantes de equipos originales (OEM).



www.caniflex.com.ar

Casa Central: Lavalle 1235 . CP2600 . Venado Tuerto . Santa Fe . Telefax: 00 54 3462 436200 (LR) . Fax: 0800-8886377 . caniflex@caniflex.com.ar

Sucursal Mendoza:

José Vicente Zapata 277 . CP5519
Dorrego - Guaymallén (Mendoza)
Telefax: 00 54 261 4325516/4324009
sucmza@caniflex.com.ar

Sucursal San Francisco:

Ricardo Tampieri 4415 (P. Ind.) . CP2400
San Francisco . Córdoba
Telefax: 00 54 3564 426393 / 445806
sucsf@caniflex.com.ar

Sucursal Buenos Aires:

Av. Mitre 3630 . CPB1605BUS
Munro . Buenos Aires
Tel. 00 54 11 45096600 Rot.
sucba@caniflex.com.ar

Sucursal Rosario:

Av. Pdte. Perón 7353 . CPS2007HIF
Rosario . Santa Fe
Tel. 00 54 341 4564844 / 4583940 Rot.
sucros@caniflex.com.ar